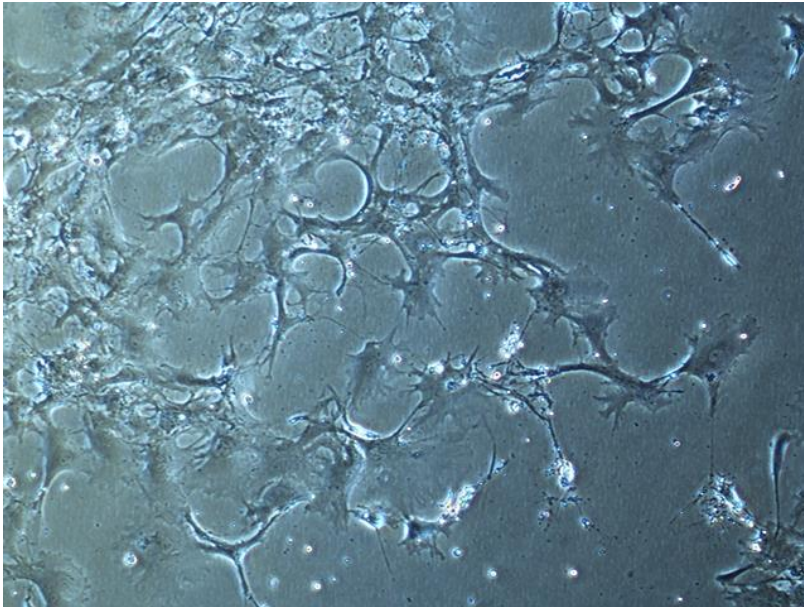


CELL LINE INFORMATION SHEET

Cell line ID: BW01k-p



Animal Group: Mammals

Sub-Group: Whales

Species Name: Blainville's beaked whale (*Mesoplodon densirostris*)

Tissue: Kidney

Cell type: Fibroblast

Cell culture source

Sex: N/A

Age (or age-class): N/A

Length (cm): N/A

Weight (kg): N/A

Condition: Stranded

Location sampled (GPS co-ordinates): Dolphin Marine Magic (-30.298648, 153.136188)

Date of sample collection: 02/03/2017

Cell culture instructions

ARI-TOX Marine Wildlife CellBank

www.aritox.com/mwcb



Growth medium: DMEM + GlutaMax with 10% fetal bovine serum (FBS). Antibiotics can also be used at concentrations of 1% penicillin/streptomycin (10,000 U/mL stock), 1% amphotericin B (250 µg/mL stock)

Incubation temperature (°C): 37

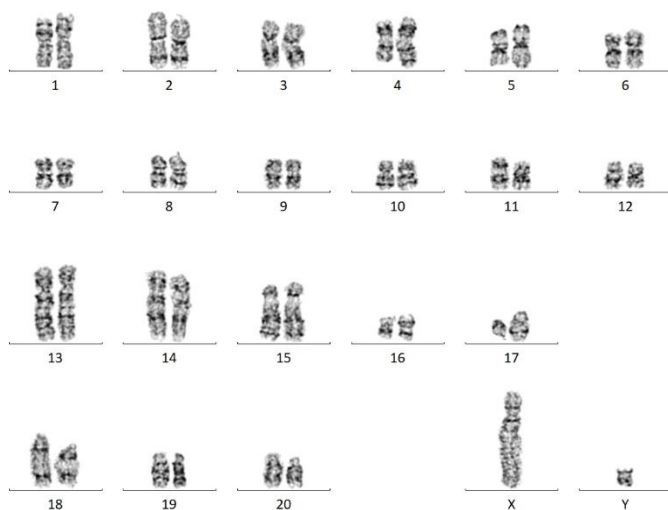
Incubation CO2 (%): 5%

Cryopreservation

All aliquots are at a concentration 1,000,000 cells/mL in 1 mL of growth medium (see care instructions) supplemented with 10% dimethyl sulfoxide (DMSO)

DNA sequence: Mesoplodon densirostris, 99.41%

Karyotype: 42, XY



Mycoplasma contamination: No

Notes: Nil