

CELL LINE INFORMATION SHEET

---

Cell line ID: CB01s-p



**Animal Group:** Mammals

**Sub-Group:** Dolphins

**Species Name:** Common bottlenose dolphin (*Tursiops truncatus*)

**Tissue:** Skin

**Cell type:** Fibroblast

**Cell culture source**

Sex: F

Age (or age-class): ~33

Length (cm): N/A

Weight (kg): N/A

Condition: Wild caught 1994

Location sampled (GPS co-ordinates): Sea World (-27.960236, 153.425884)

Date of sample collection: 03/03/2017

**Cell culture instructions**

# ARI-TOX Marine Wildlife CellBank

[www.aritox.com/mwcb](http://www.aritox.com/mwcb)



Growth medium: DMEM + GlutaMax with 10% fetal bovine serum (FBS). Antibiotics can also be used at concentrations of 1% penicillin/streptomycin (10,000 U/mL stock), 1% amphotericin B (250 µg/mL stock)

Incubation temperature (°C): 37

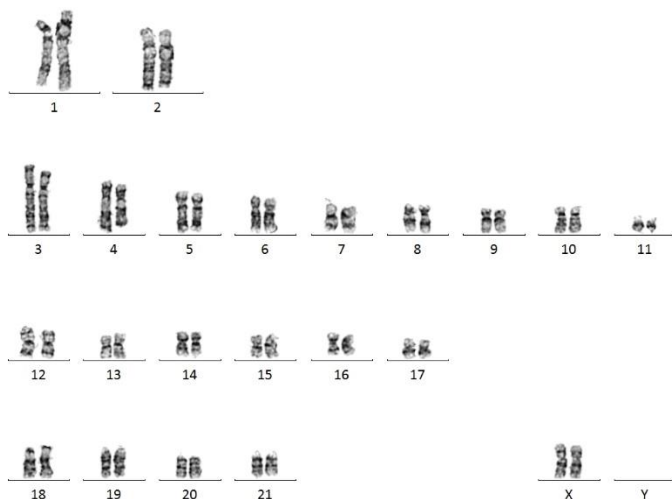
Incubation CO<sub>2</sub> (%): 5%

## Cryopreservation

All aliquots are at a concentration 1,000,000 cells/mL in 1 mL of growth medium (see care instructions) supplemented with 10% dimethyl sulfoxide (DMSO)

**DNA sequence:** *Tursiops truncatus*, 99.27%

**Karyotype:** 44, XX



**Mycoplasma contamination:** No

**Notes:** Nil