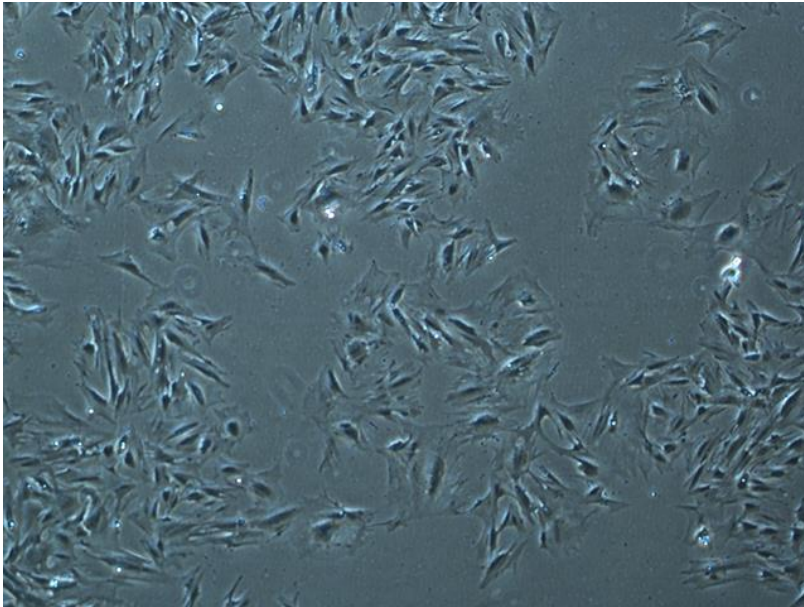


CELL LINE INFORMATION SHEET

Cell line ID: CB02s-p



Animal Group: Mammals

Sub-Group: Dolphins

Species Name: Common bottlenose dolphin (*Tursiops truncatus*)

Tissue: Skin

Cell type: Fibroblast

Cell culture source

Sex: M

Age (or age-class): ~43

Length (cm): N/A

Weight (kg): N/A

Condition: Wild caught 1985

Location sampled (GPS co-ordinates): Sea World (-27.960236, 153.425884)

Date of sample collection: 22/03/2017

Cell culture instructions

ARI-TOX Marine Wildlife CellBank

www.aritox.com/mwcb



Growth medium: DMEM + GlutaMax with 10% fetal bovine serum (FBS). Antibiotics can also be used at concentrations of 1% penicillin/streptomycin (10,000 U/mL stock), 1% amphotericin B (250 µg/mL stock)

Incubation temperature (°C): 37

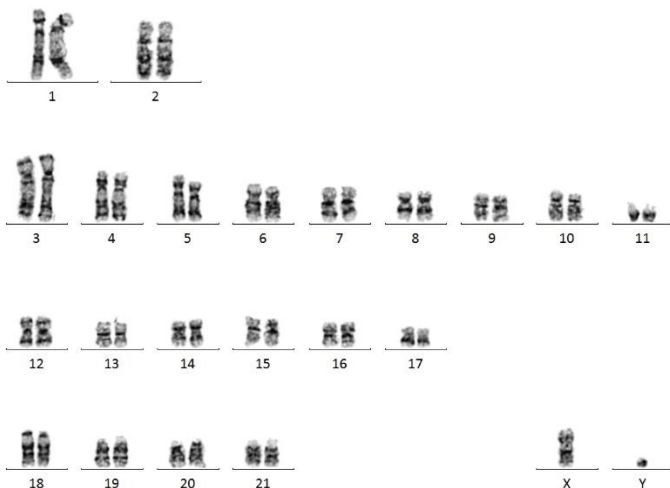
Incubation CO₂ (%): 5%

Cryopreservation

All aliquots are at a concentration 1,000,000 cells/mL in 1 mL of growth medium (see care instructions) supplemented with 10% dimethyl sulfoxide (DMSO)

DNA sequence: *Tursiops truncatus*, 99.85%

Karyotype: 44, XY



Mycoplasma contamination: Inconclusive

Notes: Nil