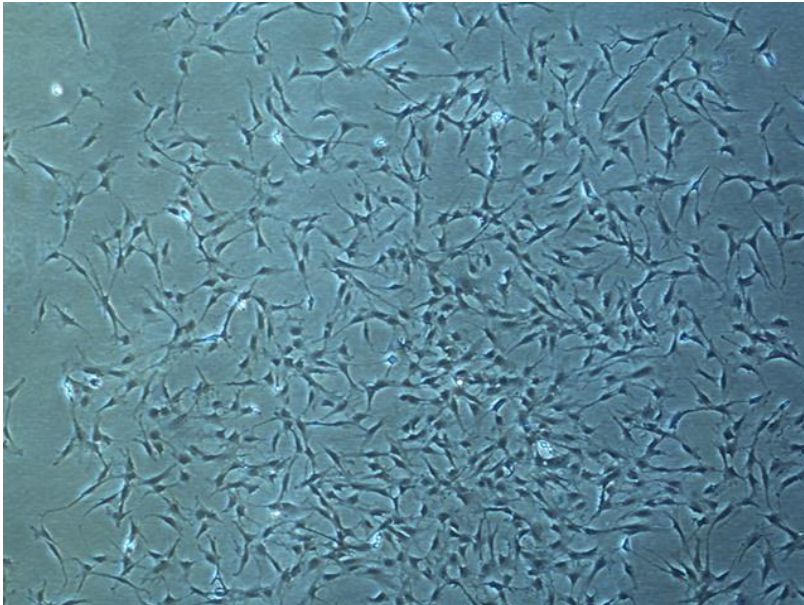

CELL LINE INFORMATION SHEET

Cell line ID: GT01s-p



Animal Group: Reptiles

Sub-Group: Sea turtles

Species Name: Green turtle (*Chelonia mydas*)

Tissue: Skin

Cell type: Fibroblast

Cell culture source

Sex: F

Age (or age-class): A

Length (cm): 111.8

Weight (kg): N/A

Condition: Healthy

Location sampled (GPS co-ordinates): Moreton Bay (-27.279373, 153.344700)

Date of sample collection: 10/05/2015

Cell culture instructions

ARI-TOX Marine Wildlife CellBank

www.aritox.com/mwcb



Growth medium: RPMI-1640 with 10% fetal bovine serum (FBS). Antibiotics can also be used at concentrations of 1% penicillin/streptomycin (10,000 U/mL stock), 1% amphotericin B (250 µg/mL stock)

Incubation temperature (°C): 30

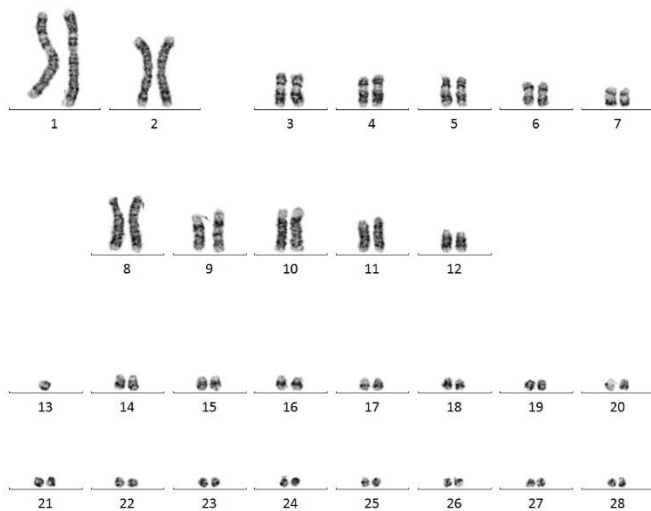
Incubation CO₂ (%): 5%

Cryopreservation

All aliquots are at a concentration 1,000,000 cells/mL in 1 mL of growth medium (see care instructions) supplemented with 10% dimethyl sulfoxide (DMSO)

DNA sequence: Chelonia mydas, 99.84%

Karyotype: 56, 75% of cells were tetraploid



Mycoplasma contamination: No

Notes: Nil