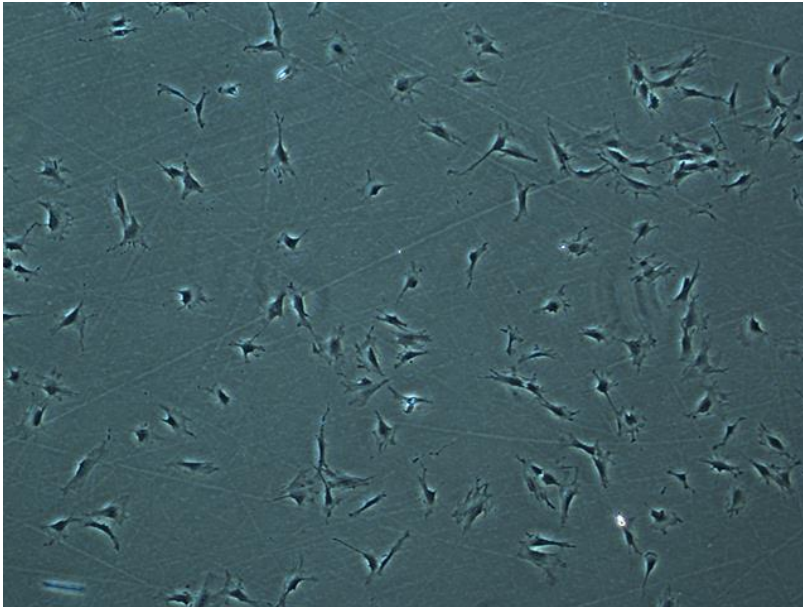

CELL LINE INFORMATION SHEET

Cell line ID: GT06s-p



Animal Group: Reptiles

Sub-Group: Sea turtles

Species Name: Green turtle (*Chelonia mydas*)

Tissue: Skin

Cell type: Fibroblast

Cell culture source

Sex: I

Age (or age-class): SA

Length (cm): 65

Weight (kg): N/A

Condition: Healthy

Location sampled (GPS co-ordinates): Booral (-25.364905, 152.916894)

Date of sample collection: 21/11/2015

Cell culture instructions

ARI-TOX Marine Wildlife CellBank

www.aritox.com/mwcb



Growth medium: RPMI-1640 with 10% fetal bovine serum (FBS). Antibiotics can also be used at concentrations of 1% penicillin/streptomycin (10,000 U/mL stock), 1% amphotericin B (250 µg/mL stock)

Incubation temperature (°C): 30

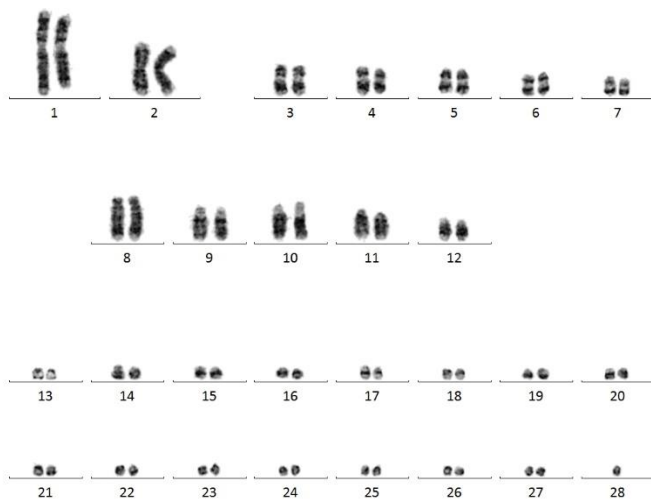
Incubation CO₂ (%): 5%

Cryopreservation

All aliquots are at a concentration 1,000,000 cells/mL in 1 mL of growth medium (see care instructions) supplemented with 10% dimethyl sulfoxide (DMSO)

DNA sequence: *Chelonia mydas*, 100%, two peaks – mixed, aligns with *Caretta caretta* but not 100%

Karyotype: 56



Mycoplasma contamination: No

Notes: Nil