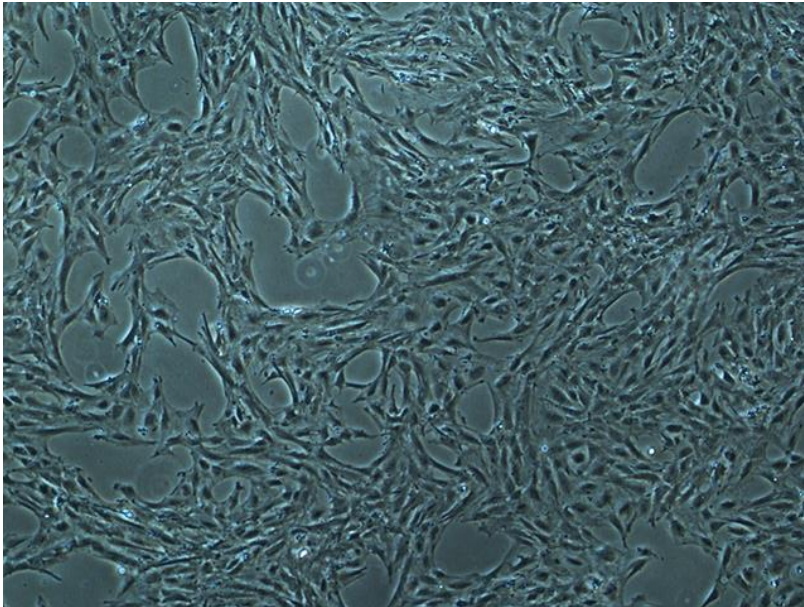

CELL LINE INFORMATION SHEET

Cell line ID: GT08k-p



Animal Group: Reptiles

Sub-Group: Sea turtles

Species Name: Green turtle (*Chelonia mydas*)

Tissue: Kidney

Cell type: Fibroblast

Cell culture source

Sex: I

Age (or age-class): J

Length (cm): N/A

Weight (kg): N/A

Condition: euthanised for severe emaciation, spirorchid fluke infection discovered upon necropsy

Location sampled (GPS co-ordinates): Australia Zoo Wildlife Hospital (-26.835213, 152.961139)

Date of sample collection: 11/04/2018

Cell culture instructions

ARI-TOX Marine Wildlife CellBank

www.aritox.com/mwcb



Growth medium: RPMI-1640 with 10% fetal bovine serum (FBS). Antibiotics can also be used at concentrations of 1% penicillin/streptomycin (10,000 U/mL stock), 1% amphotericin B (250 µg/mL stock)

Incubation temperature (°C): 30

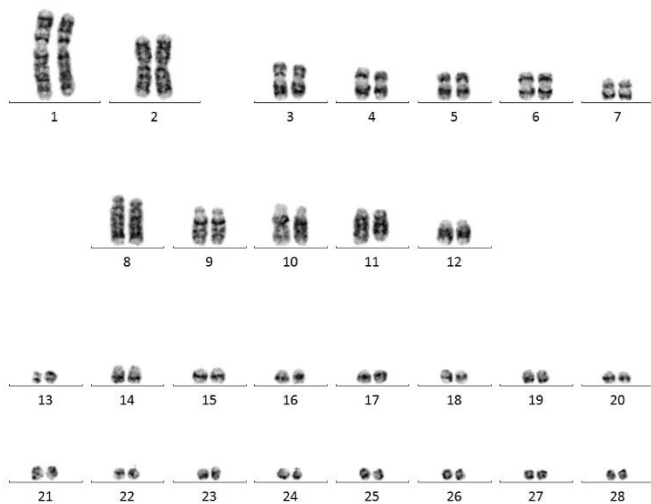
Incubation CO₂ (%): 5%

Cryopreservation

All aliquots are at a concentration 1,000,000 cells/mL in 1 mL of growth medium (see care instructions) supplemented with 10% dimethyl sulfoxide (DMSO)

DNA sequence: *Chelonia mydas*, 100%

Karyotype: 56



Mycoplasma contamination: No

Notes: Nil