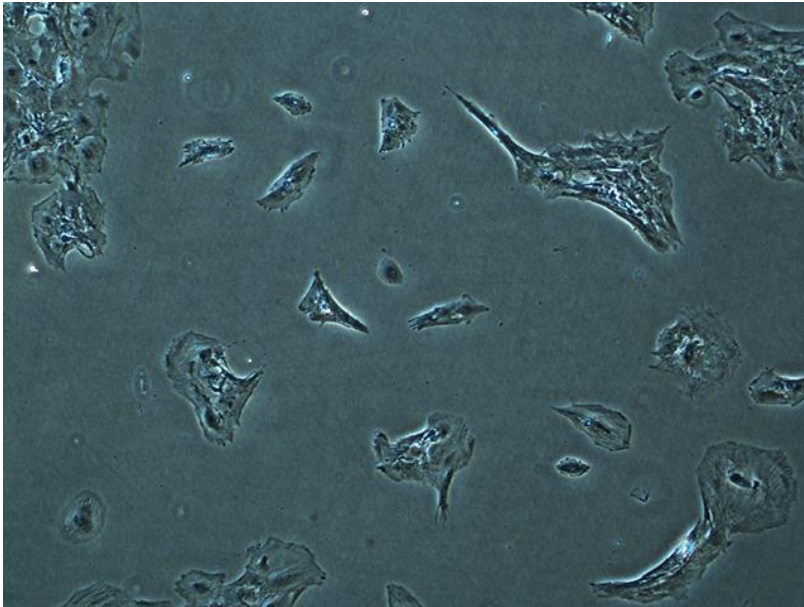


CELL LINE INFORMATION SHEET

---

Cell line ID: GT14k-p



**Animal Group:** Reptiles

**Sub-Group:** Sea turtles

**Species Name:** Green turtle (*Chelonia mydas*)

**Tissue:** Kidney

**Cell type:** Fibroblast

**Cell culture source**

Sex: M

Age (or age-class): J

Length (cm): 50

Weight (kg): N/A

Condition: Die from intestinal blockage

Location sampled (GPS co-ordinates): Sea World (-27.960236, 153.425884)

Date of sample collection: 27/03/2017

**Cell culture instructions**

# ARI-TOX Marine Wildlife CellBank

[www.aritox.com/mwcb](http://www.aritox.com/mwcb)



Growth medium: RPMI-1640 with 10% fetal bovine serum (FBS). Antibiotics can also be used at concentrations of 1% penicillin/streptomycin (10,000 U/mL stock), 1% amphotericin B (250 µg/mL stock)

Incubation temperature (°C): 30

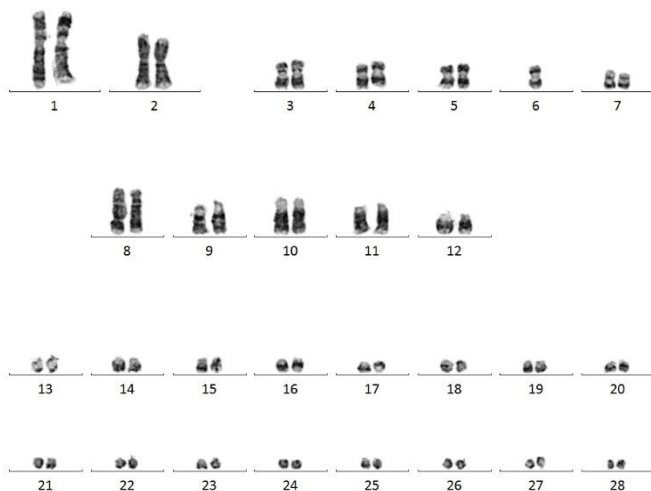
Incubation CO<sub>2</sub> (%): 5%

## Cryopreservation

All aliquots are at a concentration 1,000,000 cells/mL in 1 mL of growth medium (see care instructions) supplemented with 10% dimethyl sulfoxide (DMSO)

**DNA sequence:** *Chelonia mydas*, 99.84%

**Karyotype:** 56



**Mycoplasma contamination:** No

**Notes:** Nil