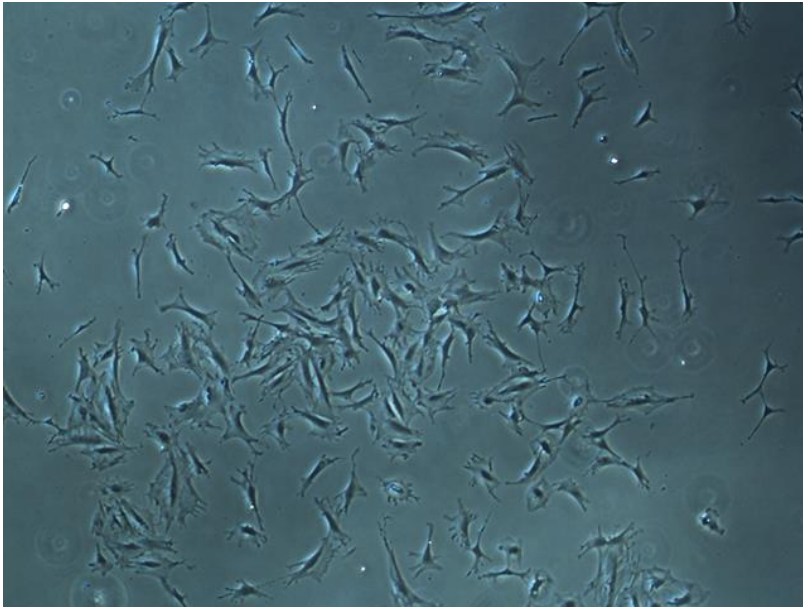


CELL LINE INFORMATION SHEET

---

Cell line ID: LT06h-p



**Animal Group:** Reptiles

**Sub-Group:** Sea turtles

**Species Name:** Loggerhead turtle (*Caretta caretta*)

**Tissue:** Heart

**Cell type:** Fibroblast

**Cell culture source**

Sex: F

Age (or age-class): A

Length (cm): 82

Weight (kg): 44

Condition: euthanised due to severe boat strike

Location sampled (GPS co-ordinates): Port Curtis (-23.770530, 151.299828)

Date of sample collection: 09/05/2017

**Cell culture instructions**

# ARI-TOX Marine Wildlife CellBank

[www.aritox.com/mwcb](http://www.aritox.com/mwcb)



Growth medium: RPMI-1640 with 10% fetal bovine serum (FBS). Antibiotics can also be used at concentrations of 1% penicillin/streptomycin (10,000 U/mL stock), 1% amphotericin B (250 µg/mL stock)

Incubation temperature (°C): 30

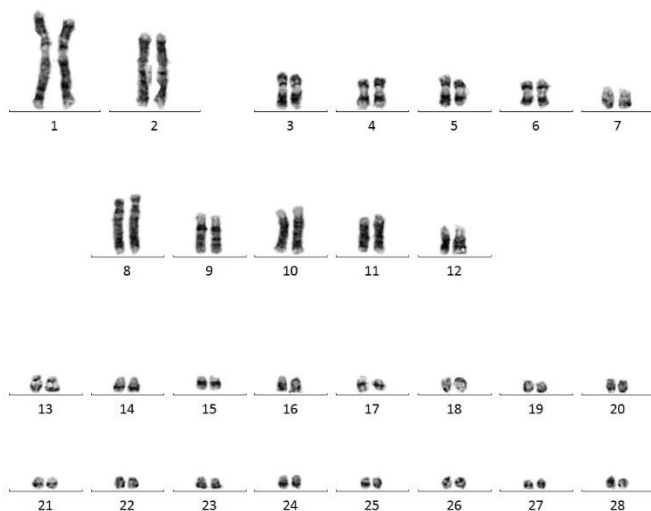
Incubation CO<sub>2</sub> (%): 5%

## Cryopreservation

All aliquots are at a concentration 1,000,000 cells/mL in 1 mL of growth medium (see care instructions) supplemented with 10% dimethyl sulfoxide (DMSO)

**DNA sequence:** *Caretta caretta*, 99.41%

**Karyotype:** 56



**Mycoplasma contamination:** No

**Notes:** Nil