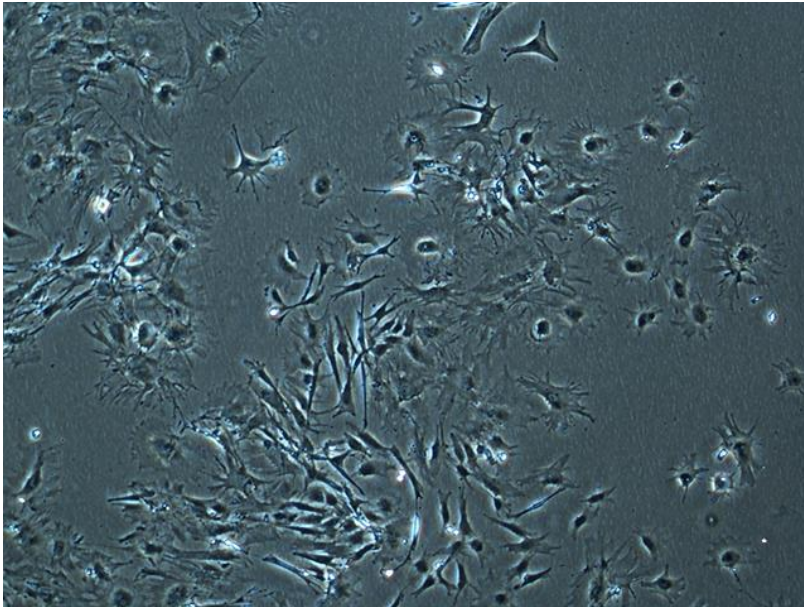

CELL LINE INFORMATION SHEET

Cell line ID: RD01g-p



Animal Group: Mammals

Sub-Group: Dolphin

Species Name: Risso's dolphin (*Grampus griseus*)

Tissue: Lung

Cell type: Fibroblast

Cell culture source

Sex: N/A

Age (or age-class): N/A

Length (cm): N/A

Weight (kg): N/A

Condition: Stranded

Location sampled (GPS co-ordinates): Dolphin Marine Magic (-30.298648, 153.136188)

Date of sample collection: 2016

Cell culture instructions

ARI-TOX Marine Wildlife CellBank

www.aritox.com/mwcb



Growth medium: DMEM + GlutaMax with 10% fetal bovine serum (FBS). Antibiotics can also be used at concentrations of 1% penicillin/streptomycin (10,000 U/mL stock), 1% amphotericin B (250 µg/mL stock)

Incubation temperature (°C): 37

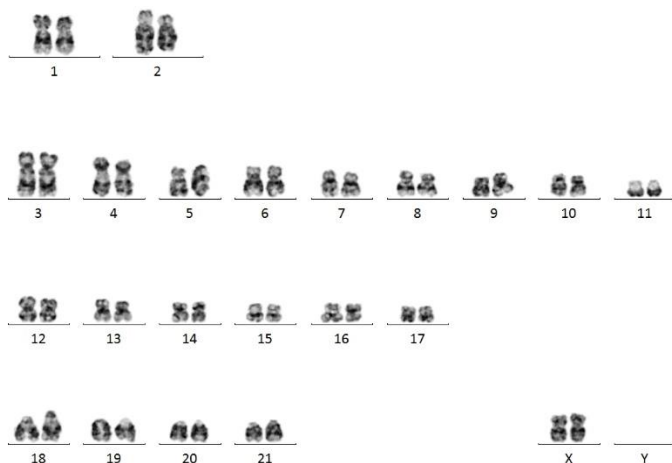
Incubation CO₂ (%): 5%

Cryopreservation

All aliquots are at a concentration 1,000,000 cells/mL in 1 mL of growth medium (see care instructions) supplemented with 10% dimethyl sulfoxide (DMSO)

DNA sequence: Grampus griseus 99.85%

Karyotype: 44, XX



Mycoplasma contamination: No

Notes: Nil